



Here to build business.  
Strategic Banking  
Corporation of Ireland

€855m

Total SBCI supported  
lending

21,132

Total SMEs Supported

## SBCI Funded Loans | SBCI loans – progress to end of June 2017

17,445 SMEs

SMEs have secured  
SBCI loans



€737m

loans committed  
to Irish SMEs



101,717

jobs supported



€42,253

Average loan size



## SBCI Risk Sharing | SBCI Agri Cashflow Loans – progress to end of June 2017

3,687 SMEs

have drawn down SBCI  
Agri Cashflow loans



€118m

loans drawn by Irish SMEs



5,011

jobs supported



€32,084

Average loan size



## SBCI funding is benefiting a wide range of sectors (% of loans by value)



23.2%  
Agriculture



4.5%  
Transport  
& Storage



10.5%  
Admin & Support



13.3%  
Accommodation  
& Food Trade



5.1%  
Construction  
Services



7.9%  
Manufacturing  
Services



17.0%  
Wholesale  
& Retail

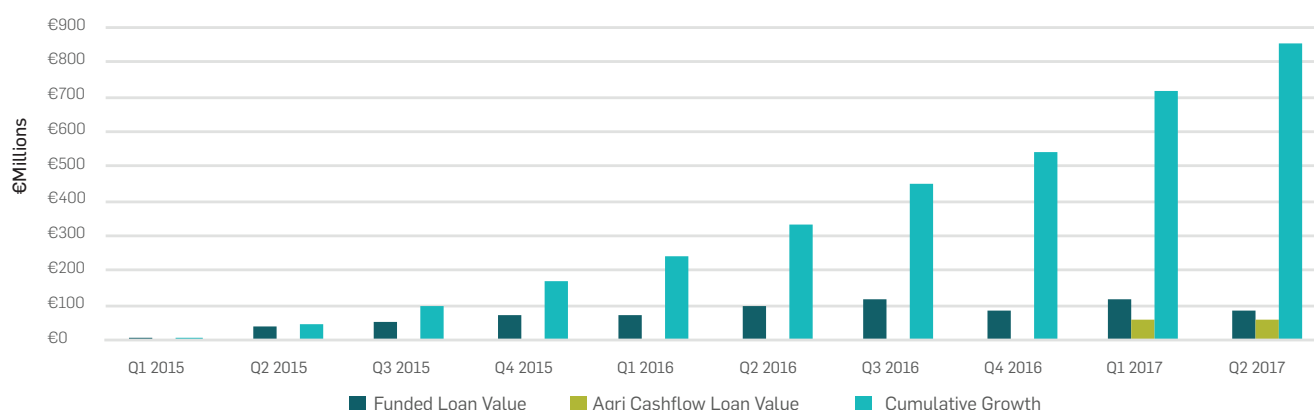


4.2%  
Professional  
& Scientific

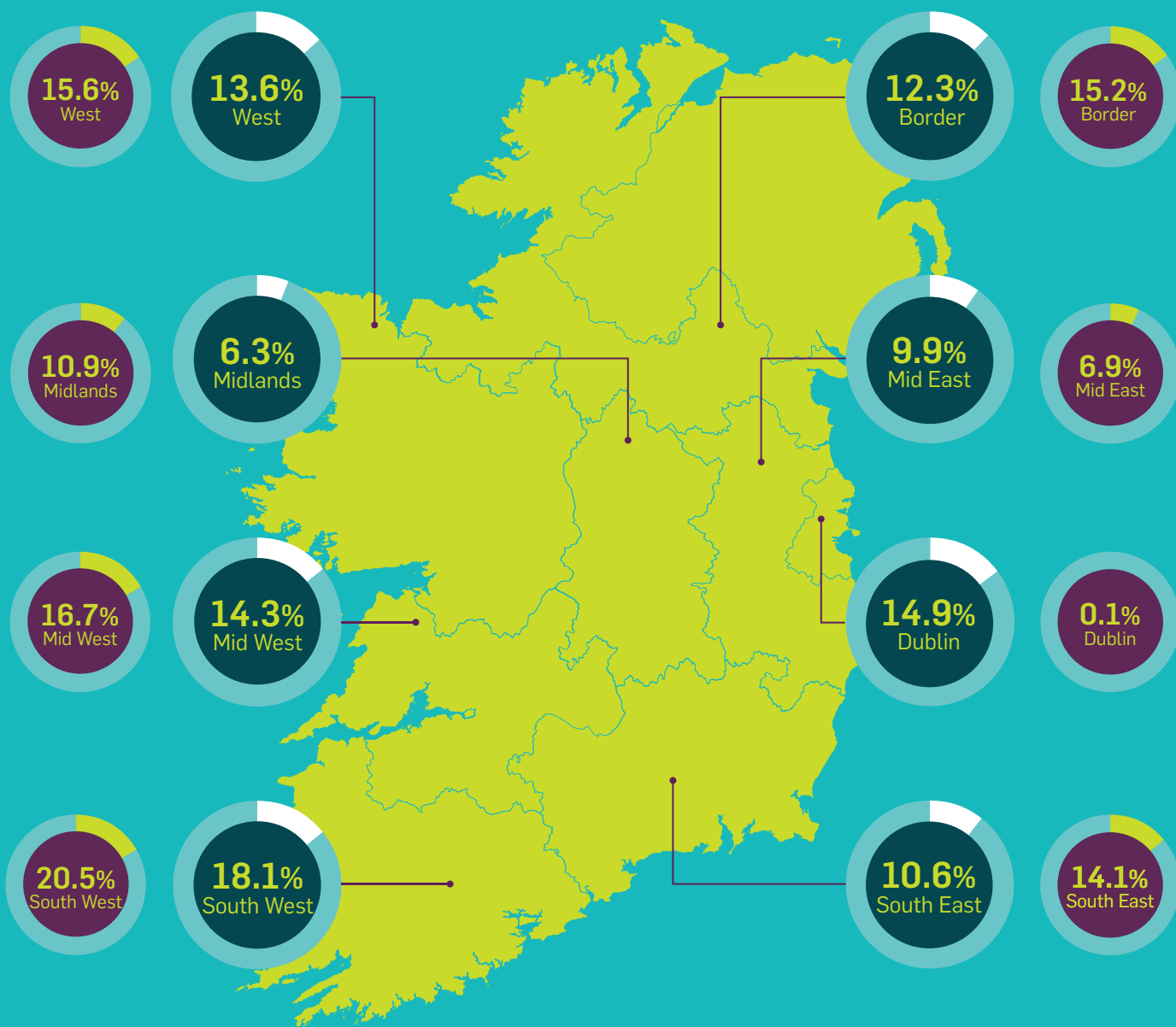


14.3%  
Other

## Quarter on Quarter Growth



## Geographical Spread (% of loan numbers)



Funded Loans



Agri Cashflow Loans

SBCI Funding is available through

